



KAFFE
FASSETT
COLLECTIVE
for

Free Spirit

Stacked & Shelved

Featuring Kaffe Fassett Collective

Stacks of color line up to showcase these beautiful Kaffe Fassett prints—a pop of pizzazz everywhere!

Collection:	Kaffe Fassett Collective
Technique:	Piecing
Skill Level:	Experienced Beginner
Crafting Time:	Longer Term*
Finished Size:	52" x 64" (132.08cm x 162.56cm)

*Crafting time based on Experienced Beginner skill level

Stacked & Shelved

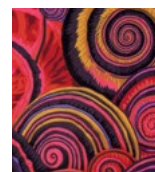


Project designed by Melissa Peda

Tech edited by Linda Turner Griepentrog

Fabric Requirements

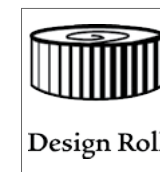
DESIGN	COLOR	ARTICLE CODE	YARDAGE
(A) Spiral Shells	Red	PWPJ073.REDXX	½ yard (45.72cm)
(B) Millefore	Red	GP92.REDD	⅝ yard (57.15cm)
(C) 2½" (6.35cm) design roll	Jewel		1 roll



(A)

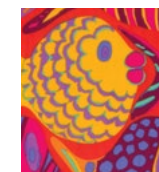


(B)



Design Roll

(C)



Backing
44"
(111.76cm)

Backing (Purchased Separately)

44" (111.76cm) Wide

Shoal Tomato PWBM051.TOMAT 3⅓ yards (3.01m)

OR

108" (274.32cm) Wide 1⅓ yards (1.52m)

Additional Requirements

- Coordinating color Coats Dual Duty XP® thread
- 60" x 72" (152.40cm x 182.88cm) batting
- Rotary cutter/mat/ruler
- Sewing machine
- Basic sewing and pressing supplies

Stacked & Shelved

Cutting

WOF = Width of Fabric

2½" (6.35cm) Design Roll, cut:
(120) 2½" x 12½" (6.35cm x 31.75cm)

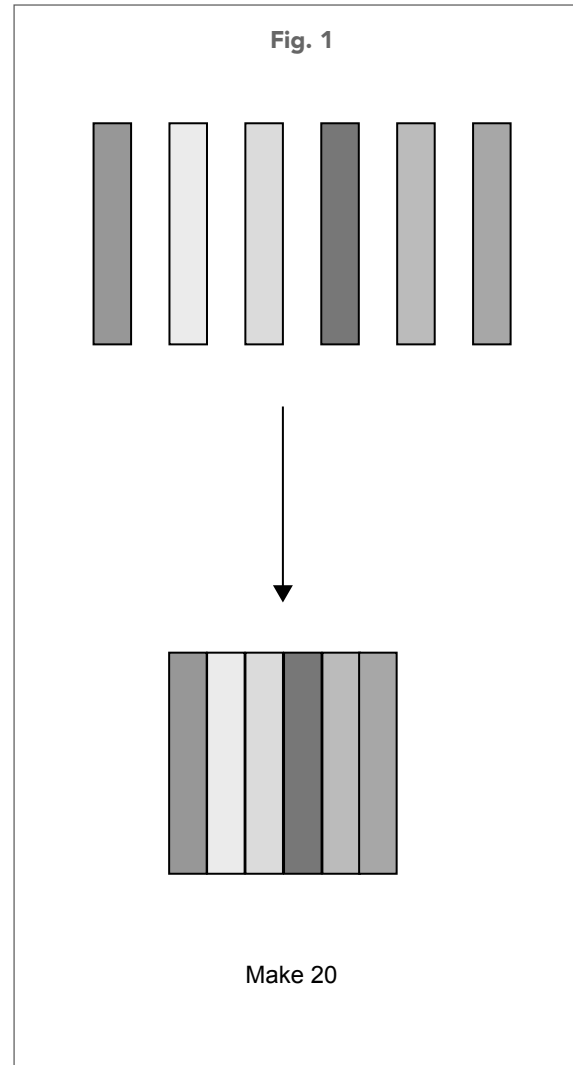
Fabric A, cut:
(6) 2½" x WOF (6.35cm x WOF), for border

Fabric B, cut:
(7) 2½" x WOF (6.35cm x WOF), for binding

Sewing

Note: Seam allowances are ¼" (.64cm) unless otherwise noted. Sew pieces right sides together. Colors can go anywhere in the quilt, or follow the quilt photo for placement if you prefer to recreate it exactly.

1. Sew (6) assorted 2½" x 12½" (6.35cm x 31.75cm) lengths together (**Fig. 1**). Make a total of (20) blocks.



Stacked & Shelved

Quilt Top Assembly

2. Lay out the blocks in (5) rows of (4) blocks each, alternating direction as shown (**Fig. 2**). Begin rows 1, 3, and 5 with vertical blocks and rows 2 and 4 with horizontal blocks.
3. Sew together (2) $2\frac{1}{2}$ " x WOF (6.35cm x WOF) **Fabric A** strips end to end. Repeat to make a second strip. Cut (2) $2\frac{1}{2}$ " x $60\frac{1}{2}$ " (6.35cm x 153.67cm) side borders. Sew (1) to each side of the quilt top.
4. Sew (1) leftover piece from Step 3 to each remaining $2\frac{1}{2}$ " x WOF (6.35cm x WOF) **Fabric A** strip. Cut (2) $2\frac{1}{2}$ " x $52\frac{1}{2}$ " (6.35cm x 133.35cm) top/bottom borders. Sew (1) to the top of the quilt and the other to the bottom of the quilt.

Finishing

5. Sew together the (7) $2\frac{1}{2}$ " x WOF (6.35cm x WOF) **Fabric B** binding strips end to end using diagonal seams. Press the seams open. Press the binding strip in half wrong sides together.
6. Layer the backing (wrong side up), batting, and quilt top (right side up). Baste the layers together and quilt as desired. Trim excess batting and backing even with the top after quilting is completed.
7. Leaving an 8" (20.32cm) tail of binding, sew binding to top of quilt through all layers matching all raw edges. Miter corners. Stop approximately 12" (30.48cm) from where you started. Lay both loose ends of binding flat along quilt edge. Where these two loose ends meet, fold them back on themselves and press to form a crease. Using this crease as your stitching line, sew the two open ends of the binding together right sides together. Trim seam to $\frac{1}{4}$ " (.64cm) and press open. Finish sewing binding to quilt.
8. Turn the binding to the back of quilt and hand-stitch in place.

