



KAFFE
FASSETT
for

Free Spirit

Green Mosaic Quilt

Featuring Kaffe Fassett Collective Spring 2019

Collection:	Kaffe Fassett Collective Spring 2019
Technique:	Piecing
Skill Level:	Confident Beginner
Finished Size:	60" x 70" (152.4cm x 177.8cm)

Project designed by Stacey Day

Tech edited by Alison M. Schmidt

Fabric Requirements

DESIGN	COLOR	ARTICLE CODE	YARDAGE
(A) Bali Brocade	CONTRAST	PWBM069.CONTRAST	1 yard (0.91m)*
(B) Turkish Delight	AQUA	PWGP081.AQUA	½ yard (45.72cm)
(C) Sea Urchins	MULTI	PWPJ100.MULTI	½ yard (45.72cm)
(D) Paper Fans	BLACK	PWGP143.BLACK	½ yard (45.72cm)
(E) Spot	GUAVA	PWGP070.GUAVA	¼ yard (22.86cm)
(F) Primulas	PERIWINKLE	PWBM071.PERIWINKLE	⅝ yard (57.15cm)
(G) Variegated Morning Glory	AQUA	PWPJ098.AQUA	½ yard (45.72cm)
(H) Rose and Hydrangea	GREEN	PWPJ097.GREEN	¾ yard (68.58cm)
(I) Cactus Flower	GREEN	PWPJ096.GREEN	⅔ yard (34.29cm)
(J) Chips	BLUE	PWBM073.BLUE	¼ yard (22.86cm)
(K) Turkish Delight	BLACK	PWGP081.BLACK	¼ yard (22.86cm)
(L) Geodes	GREY	PWPJ099.GREY	⅝ yard (57.15cm)

* includes binding

Backing (Purchased Separately)

44" (111.76cm) wide

Turkish Delight AQUA PWGP081.AQUA 4 yards (3.66m)

OR

108" (274.32cm) wide

Full Bloom BLUE QBGP004.2BLUE 2 yards (1.83m)



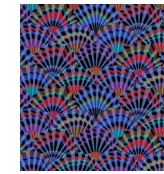
(A)



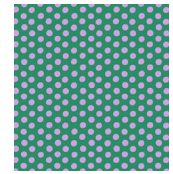
(B)



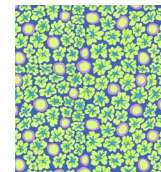
(C)



(D)



(E)



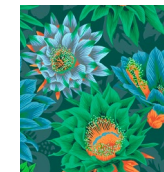
(F)



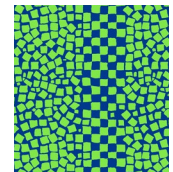
(G)



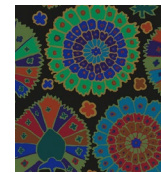
(H)



(I)



(J)



(K)



(L)



Backing
44"
(111.76cm)



Backing
108"
(274.32cm)

Additional Requirements

- Kaffe Collective 100% cotton Aurifil 50 wt thread
- 68" x 78" (170.72cm x 198.12cm) batting
- Sewing machine, iron, rotary cutter, mat, and ruler



Green Mosaic Quilt

Cutting

WOF = Width of Fabric

When sub-cutting, cut longest pieces first, and then cut smaller pieces from the remainder.

Fabric A, cut:

(2) 3" x WOF (7.62 x WOF); sub-cut (4) 3" x 8" (7.62cm x 20.32cm) and (4) 3" x 5½" (7.62cm x 13.97cm) for borders
(1) 5½" x WOF (13.97cm x WOF); sub-cut (4) 5½" x 5½" (13.97cm x 13.97cm)
(7) 2½" x WOF (6.35cm x WOF) for binding

Fabric B, cut:

(4) 3" x WOF (7.62cm x WOF); sub-cut (4) 3" x 13" (7.62cm x 33.02cm), (4) 3" x 10½" (7.62cm x 26.67cm), (4) 3" x 8" (7.62cm x 20.32cm) for borders, and (4) 3" x 5½" (7.62cm x 13.97cm) for borders

Fabric C, cut:

(5) 3" x WOF (7.62cm x WOF); sub-cut (4) 3" x 15½" (7.62cm x 39.37cm), (4) 3" x 13" (7.62cm x 33.02cm), (4) 3" x 8" (7.62cm x 20.32cm) for borders, and (6) 3" x 5½" (7.62cm x 13.97cm) for borders and sashing

Fabric D, cut:

(4) 3" x WOF (7.62cm x WOF); sub-cut (4) 3" x 10½" (7.62cm x 26.67cm), (8) 3" x 8" (7.62cm x 20.32cm) for borders and sashing, and (6) 3" x 5½" (7.62cm x 13.97cm) for borders and sashing

Fabric E, J, and K, cut:

(2) 3" x WOF (7.62cm x WOF); sub-cut (4) 3" x 8" (7.62cm x 20.32cm) and (6) 3" x 5½" (7.62cm x 13.97cm) for borders and sashing

Fabric F, cut:

(6) 3" x WOF (7.62cm x WOF); sub-cut (4) 3" x 20½" (7.62cm x 52.07cm), (4) 3" x 18" (7.62cm x 45.72cm), (4) 3" x 8" (7.62cm x 20.32cm) for borders, and (6) 3" x 5½" (7.62cm x 13.97cm) for borders and sashing

Fabric G, cut:

(5) 3" x WOF (7.62cm x WOF); sub-cut (4) 3" x 18" (7.62cm x 45.72cm), (4) 3" x 15½" (7.62cm x 39.37cm), (4) 3" x 8" (7.62cm x 20.32cm) for borders, and (6) 3" x 5½" (7.62cm x 13.97cm) for borders and sashing

Fabric H, cut:

(8) 3" x WOF (7.62cm x WOF); sub-cut (4) 3" x 25½" (7.62cm x 64.77cm), (4) 3" x 23" (7.62cm x 58.42cm), (4) 3" x 8" (7.62cm x 20.32cm) for borders, and (6) 3" x 5½" (7.62cm x 13.97cm) for borders and sashing

Fabric I, cut:

(3) 3" x WOF (7.62cm x WOF); sub-cut (8) 3" x 8" (7.62cm x 20.32cm) for borders and (10) 3" x 5½" (7.62cm x 13.97cm) for blocks, borders, and sashing

Fabric L, cut:

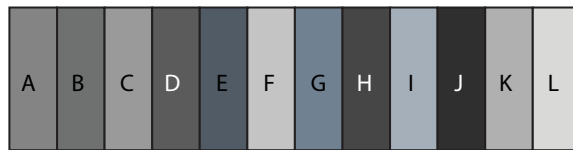
(6) 3" x WOF (7.62cm x WOF); sub-cut (4) 3" x 23" (7.62cm x 58.42cm), (4) 3" x 20½" (7.62cm x 52.07cm), (4) 3" x 8" (7.62cm x 20.32cm) for borders, and (2) 3" x 5½" (7.62cm x 13.97cm) for sashing

Instructions

Note: All seam allowances are $\frac{1}{4}$ " (0.64cm).
Pieces are sewn right sides together. Press all seams.

1. Sew (1) each 3" x 8" (7.62cm x 20.32cm) **Fabric A, B, C, D, E, F, G, H, I, J, K,** and **L** pieces together in order to make a Horizontal Border Unit 8" x 30½" (20.32cm x 77.47cm). Repeat to make (4) Horizontal Border Units. (**Fig. 1**)

Fig. 1



Horizontal Border Unit
Make 4

2. Sew (1) each 3" x 5½" (7.62cm x 13.97cm) **Fabric A, B, C, D, E, F, G, H, I, J,** and **K** pieces together in order to make a Vertical Border Unit 5½" x 27½" (13.97cm x 69.85cm). Repeat to make (4) Vertical Border Units. (**Fig. 2**)

Fig. 2



Vertical Border Unit
Make 4

3. Sew (1) each 3" x 5½" (7.62cm x 13.97cm) **Fabric C, D, E, F, G, H, I, J, K,** and **L** pieces together in order to make a Center Sashing Unit 5½" x 25½" (13.97cm x 64.77cm). Repeat to make (2) Center Sashing Units. (**Fig. 3**)

Fig. 3



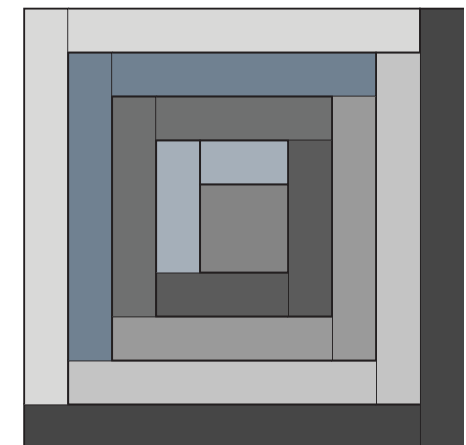
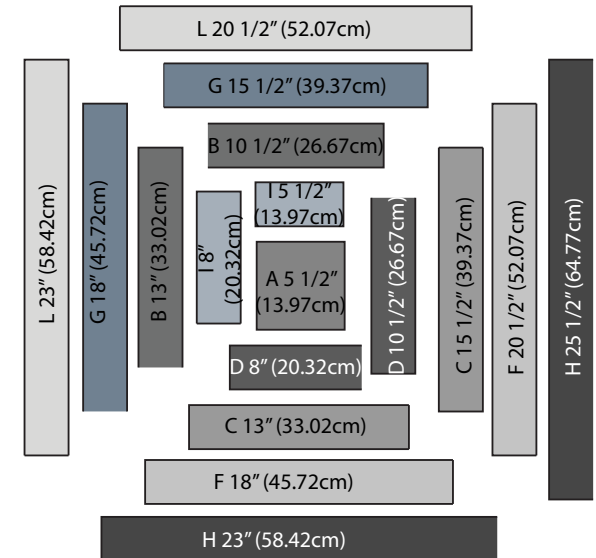
Center Sashing Unit
Make 2

4. Referring to the block assembly diagram for fabric placement, make a Log Cabin block, starting with the **Fabric A** 5½" x 5½" (13.97cm x 13.97cm) square in the center, pressing after each seam. Trim as needed to 25½" x 25½" (64.77cm x 64.77cm). Repeat to make (4) Log Cabin blocks. (**Fig. 4**)

Quilt Top Assembly

5. Referring to the **Quilt Layout** diagram on page 5, lay out the Log Cabin blocks, sashing, and border units together as shown, paying close attention to the orientation of each and rotating as needed.
6. Sew the blocks and units together in rows, pressing after each seam.
7. Sew the rows together to complete the quilt top. Press.

Fig. 4



Log Cabin Block
Make 4

Finishing

8. Layer the backing, batting, and quilt top; baste the layers together and quilt as desired. Trim the batting and backing even with the quilt top.
9. Sew together the 2½" (6.35cm) **Fabric A** binding strips end to end using diagonal seams to make one continuous piece. Fold in half wrong sides together and press the length.
10. Leaving an 8" (20.32cm) tail of binding, sew the binding to the top of the quilt through all layers matching all raw edges. Miter corners. Stop approximately 12" (30.48cm) from where you started. Lay both loose ends of binding flat along quilt edge. Where the loose ends meet, fold them back on themselves and press to form a crease. Using this crease as your stitching line, sew the two open ends of the binding right sides together. Trim seam to ¼" (.64cm) and press open.
11. Turn the binding to the back of the quilt and hand-stitch or machine stitch in place.

Quilt Layout

